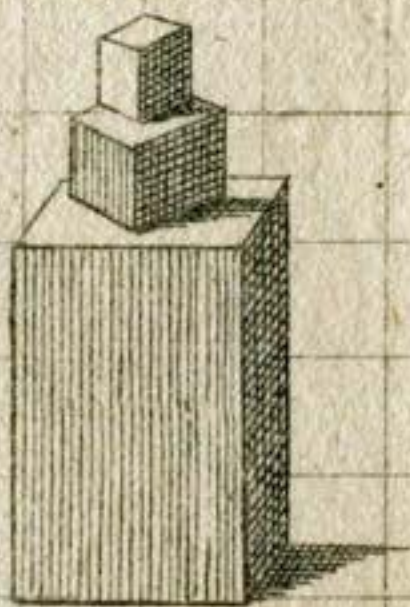
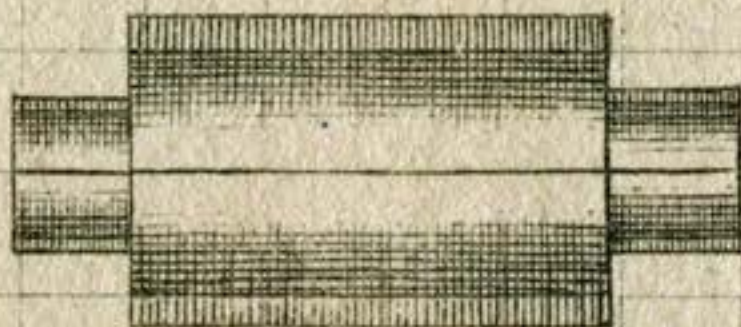
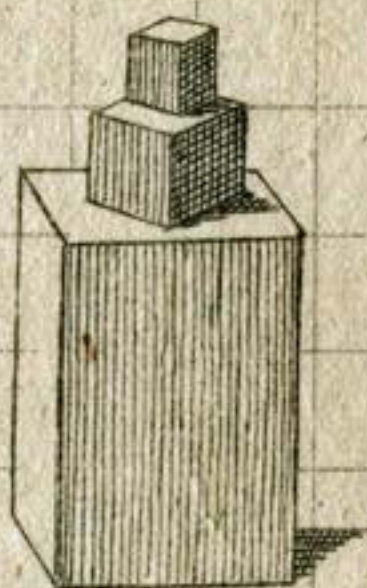


Linsenforn.



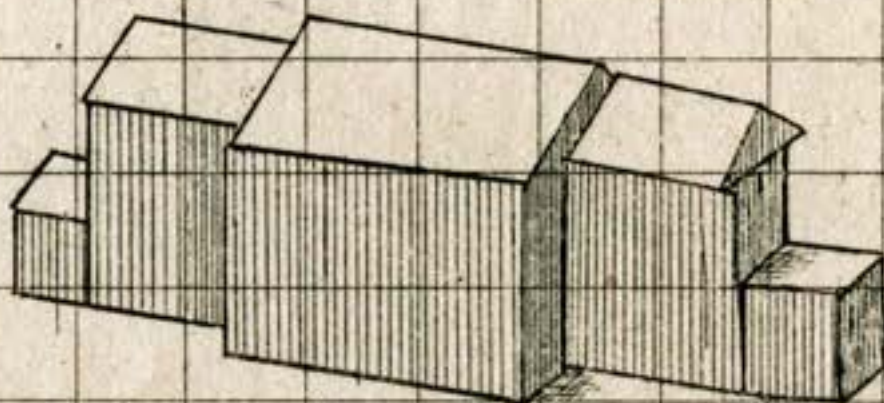
2.



Grasenforn.



3

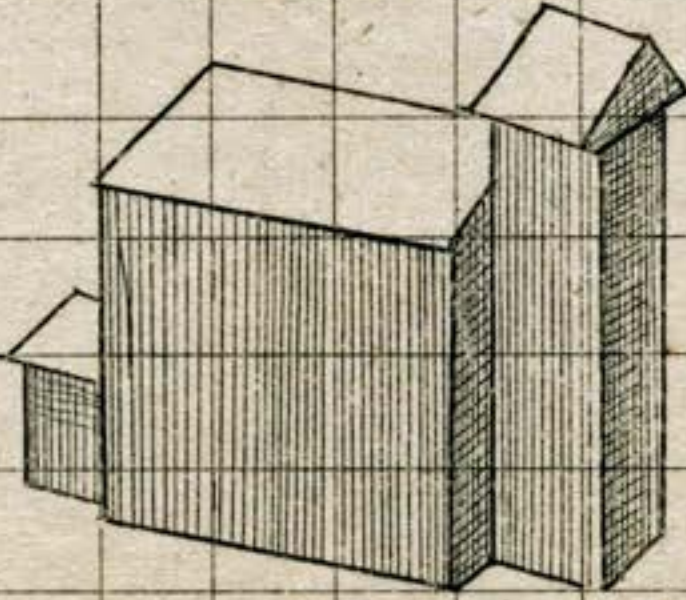


Linsenfuß
mit Balken



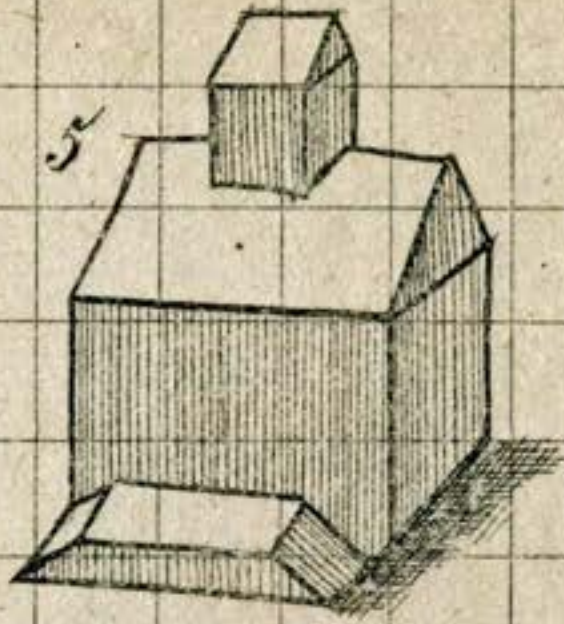
Opt. Linsf. K. No 5 Linsenform.

4

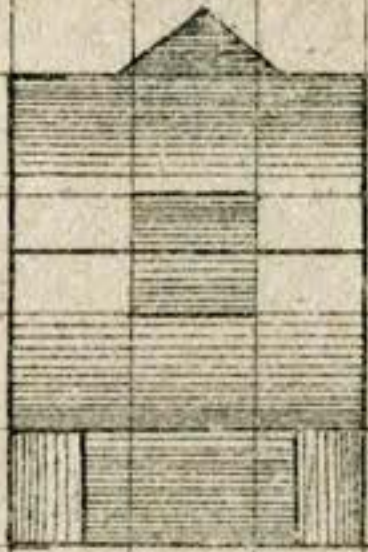


Ringel.



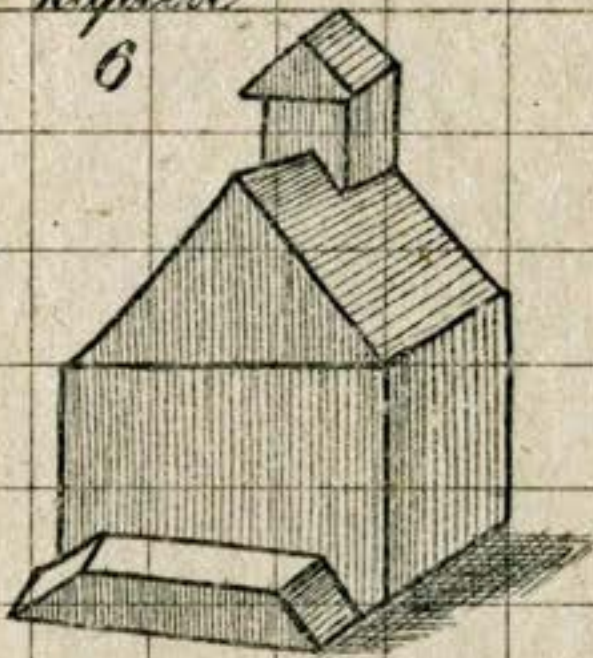


Gemeindehaus.

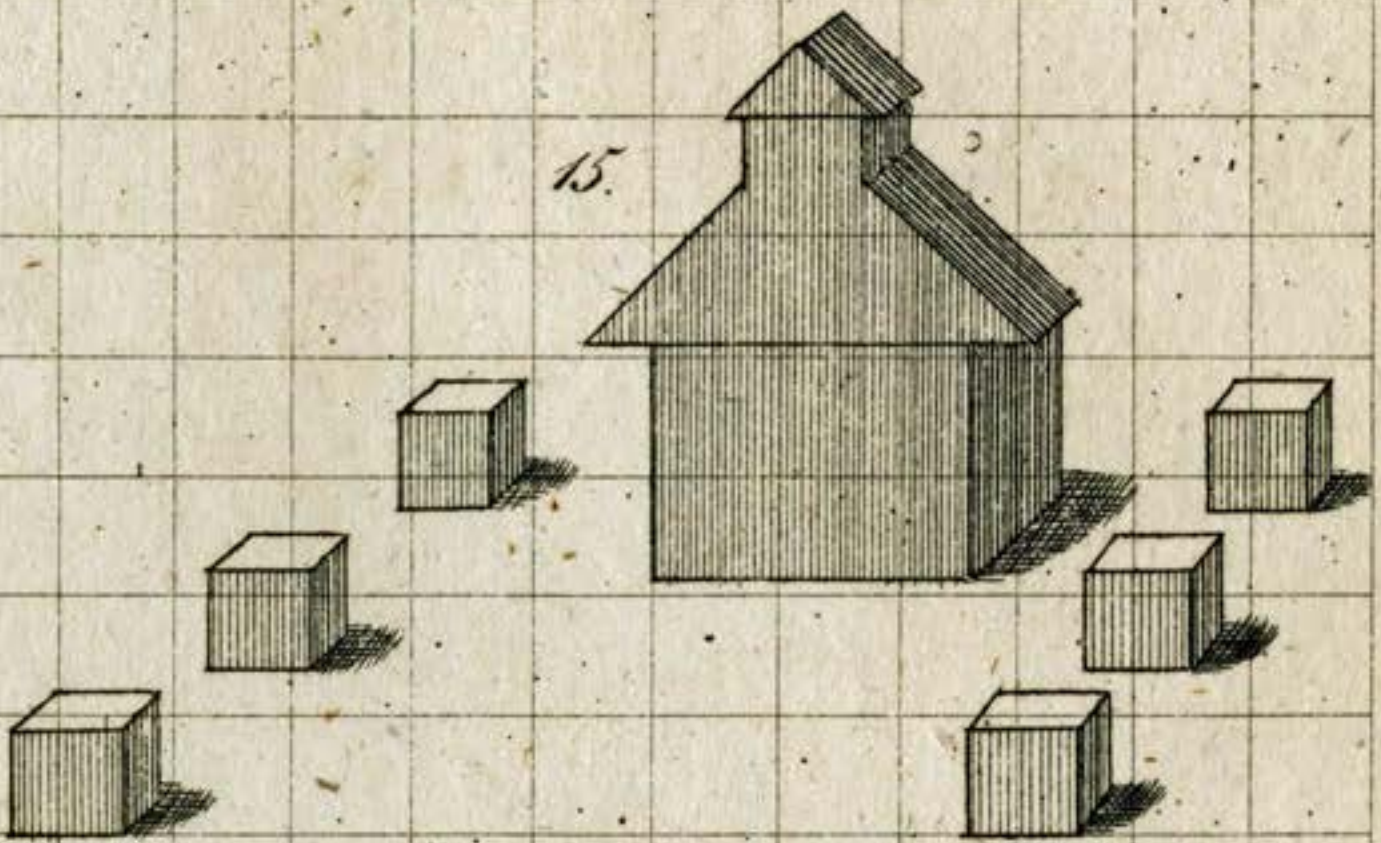


Kapelle

6



15.

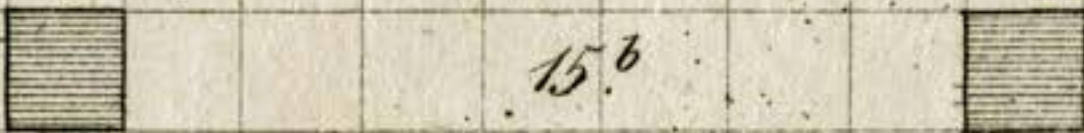


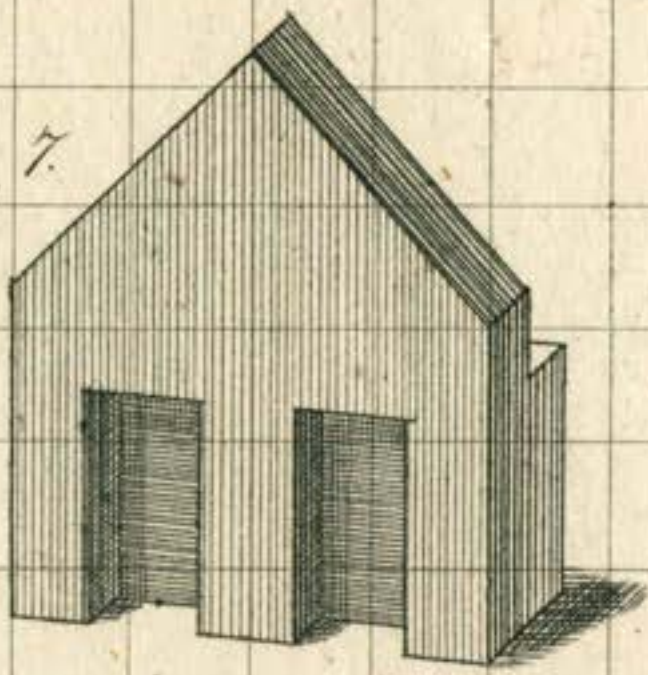
Gartenhaus

u. Garten.

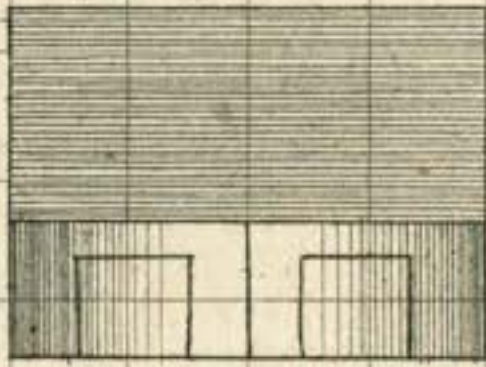


15^b

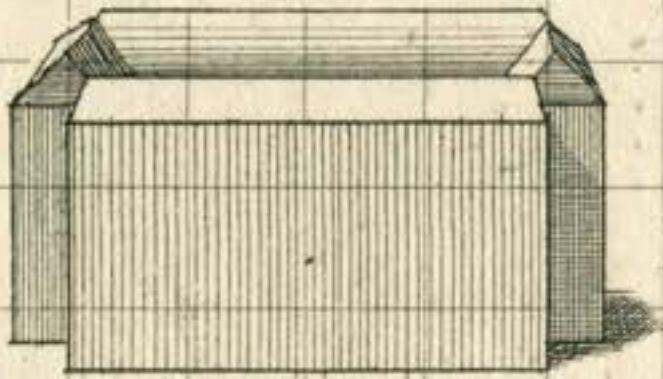




Hauptwacht



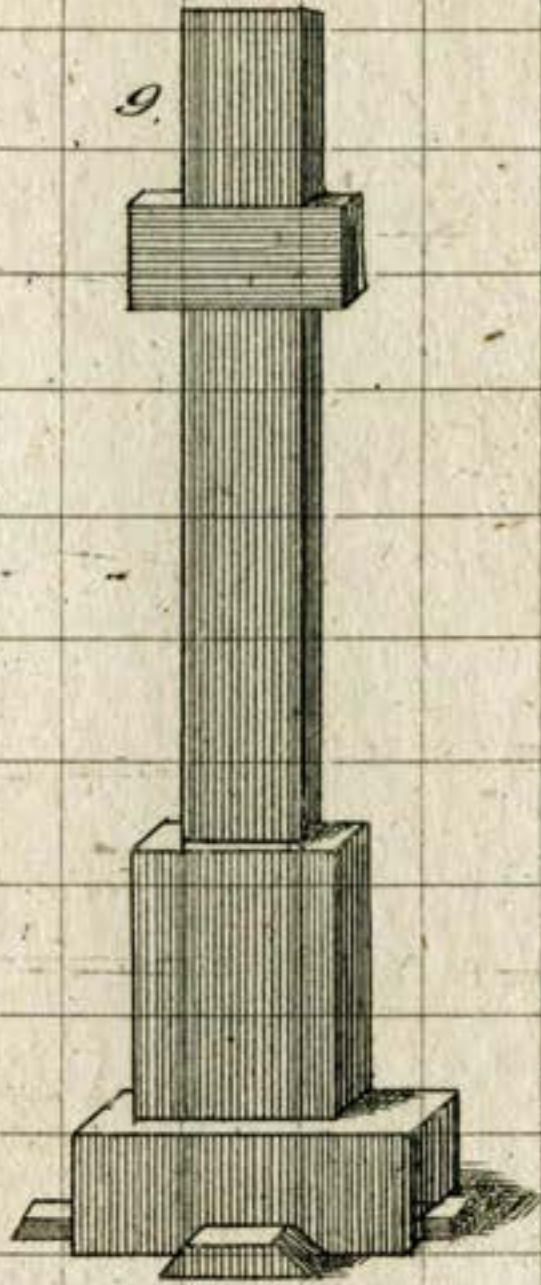
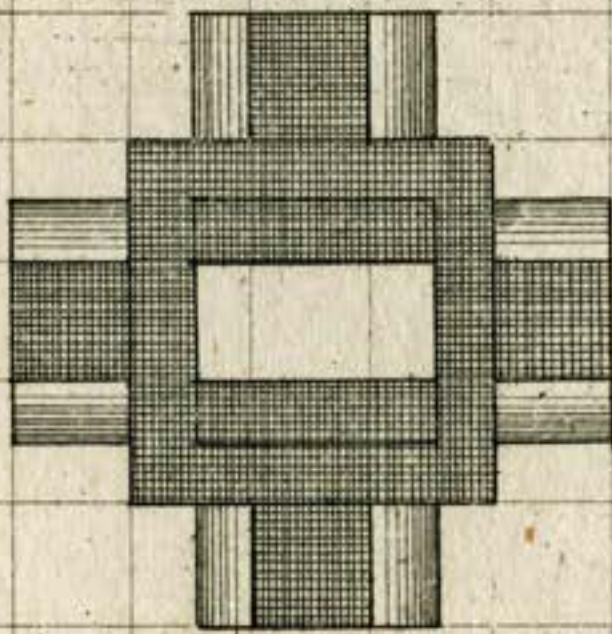
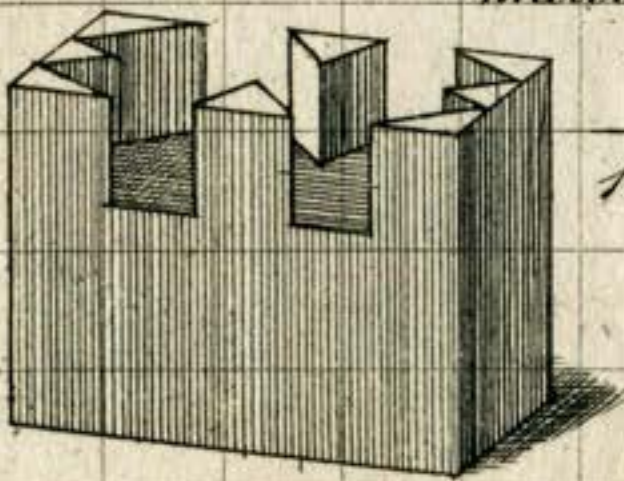
8



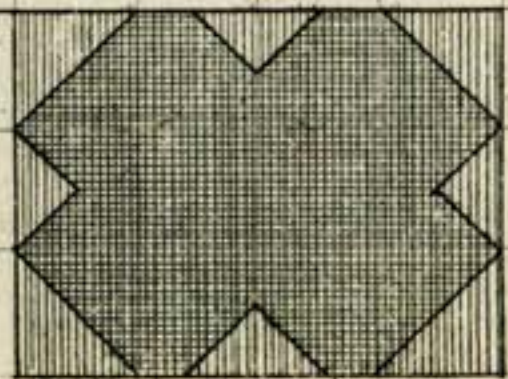
Arbeitshaus



9.

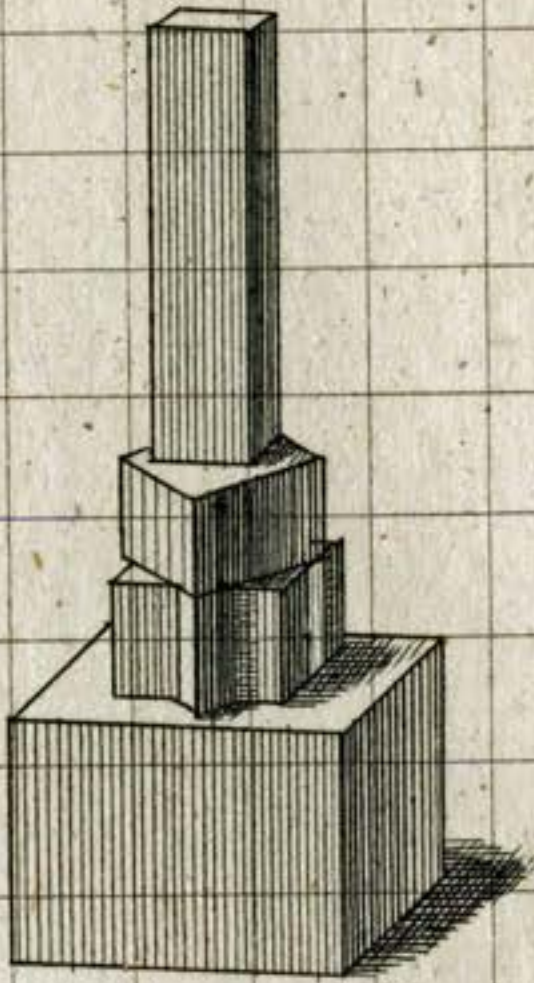
*Hohes Kreuz.**Mauerschranze.*

10.

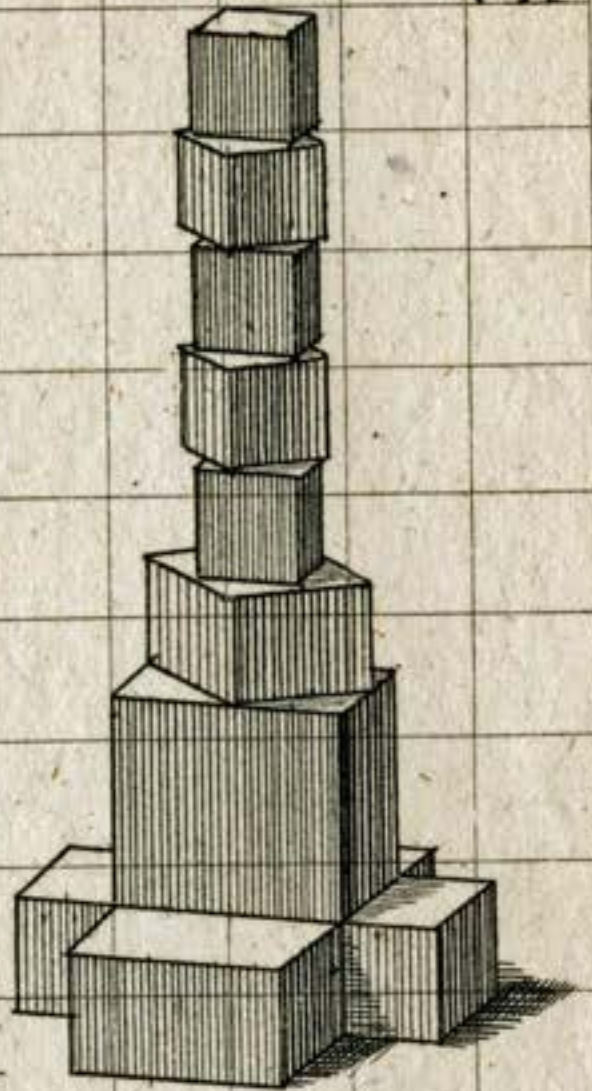


12.

11.

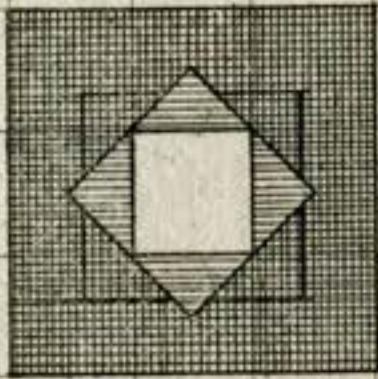


Obelisk.

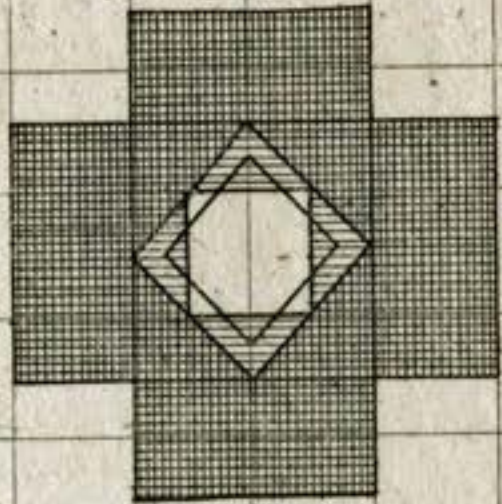


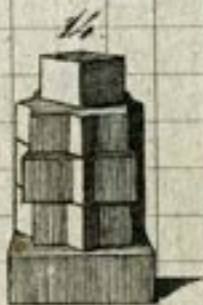
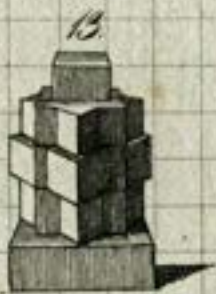
Ehrensäule.

11.



12.

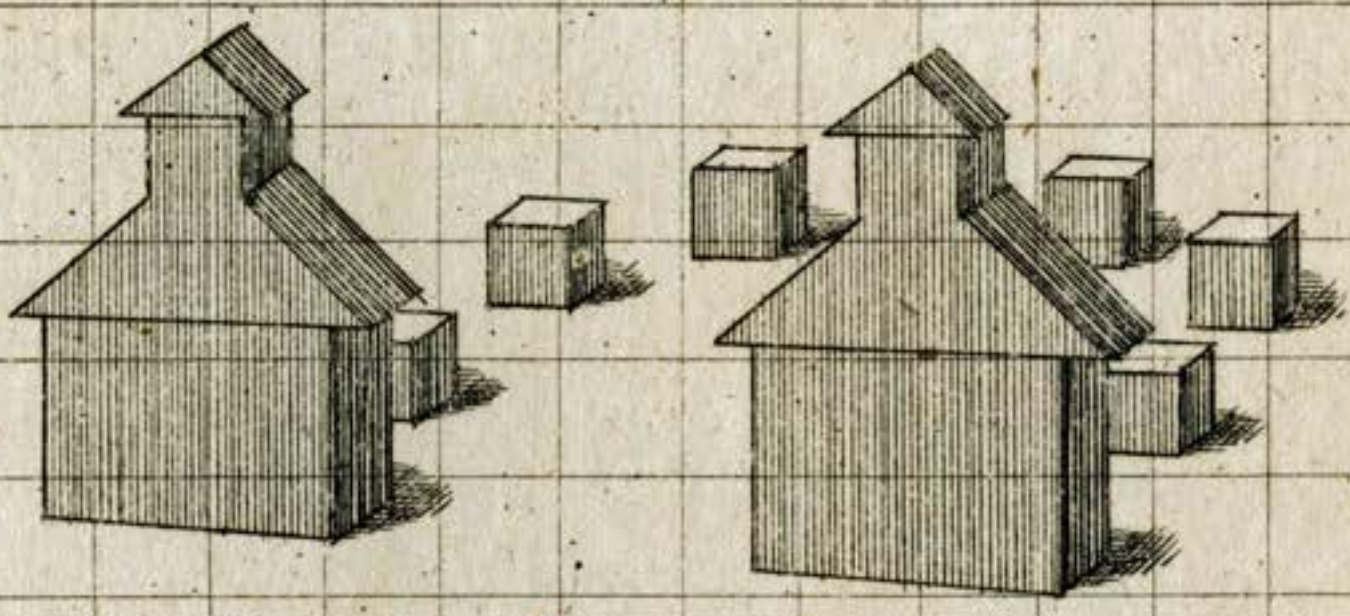




Seitenansicht.

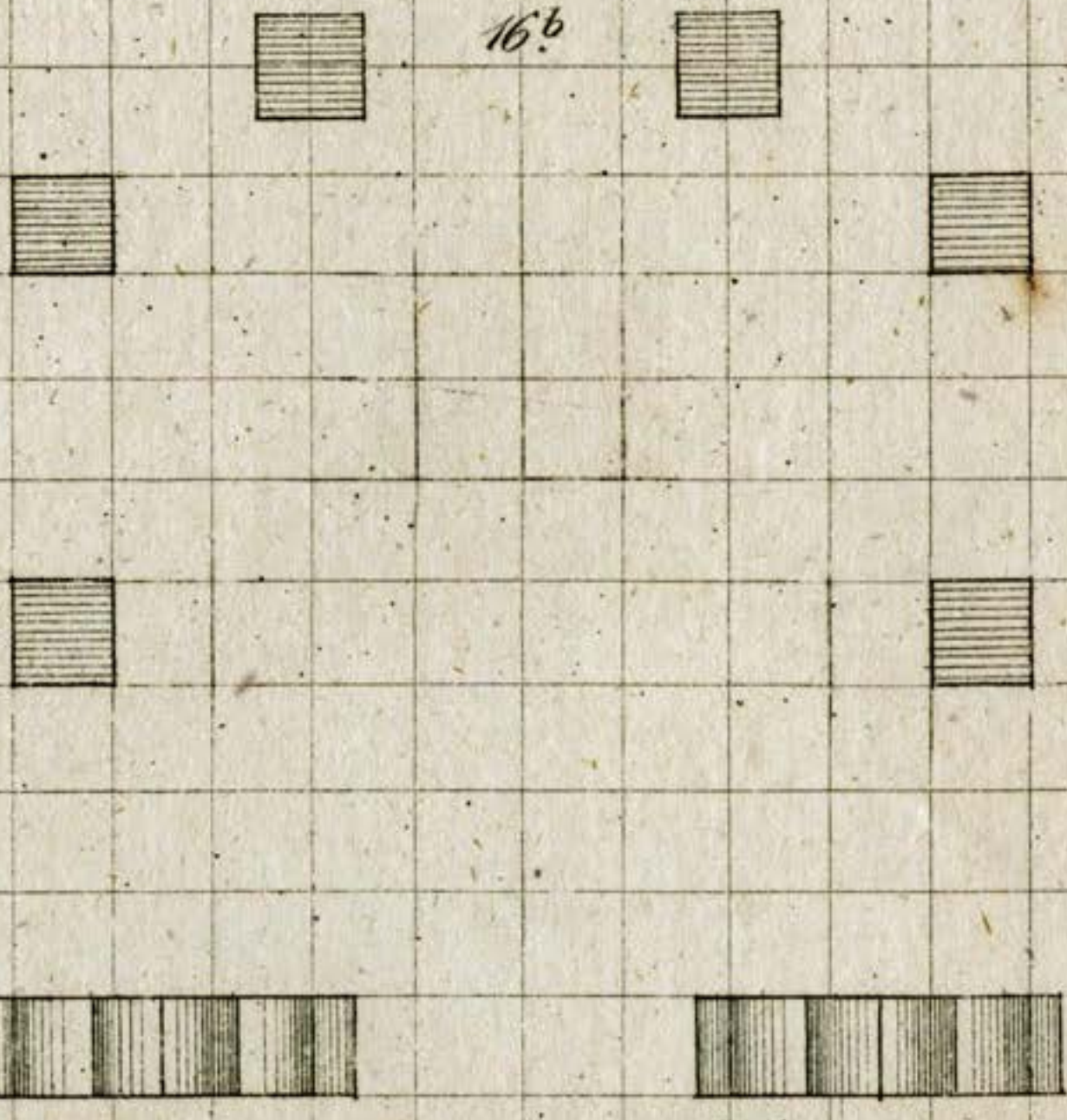


16.

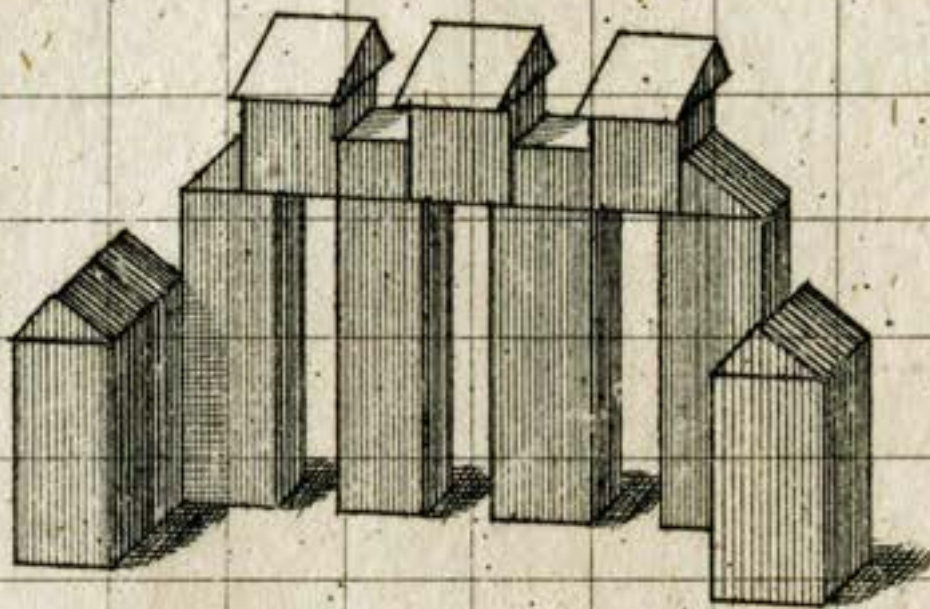


Gartenhaus m. Garten.

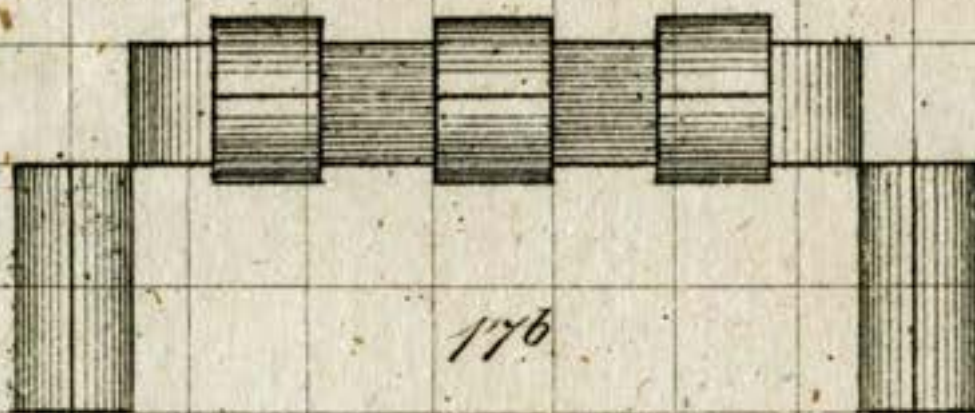
16^b



17

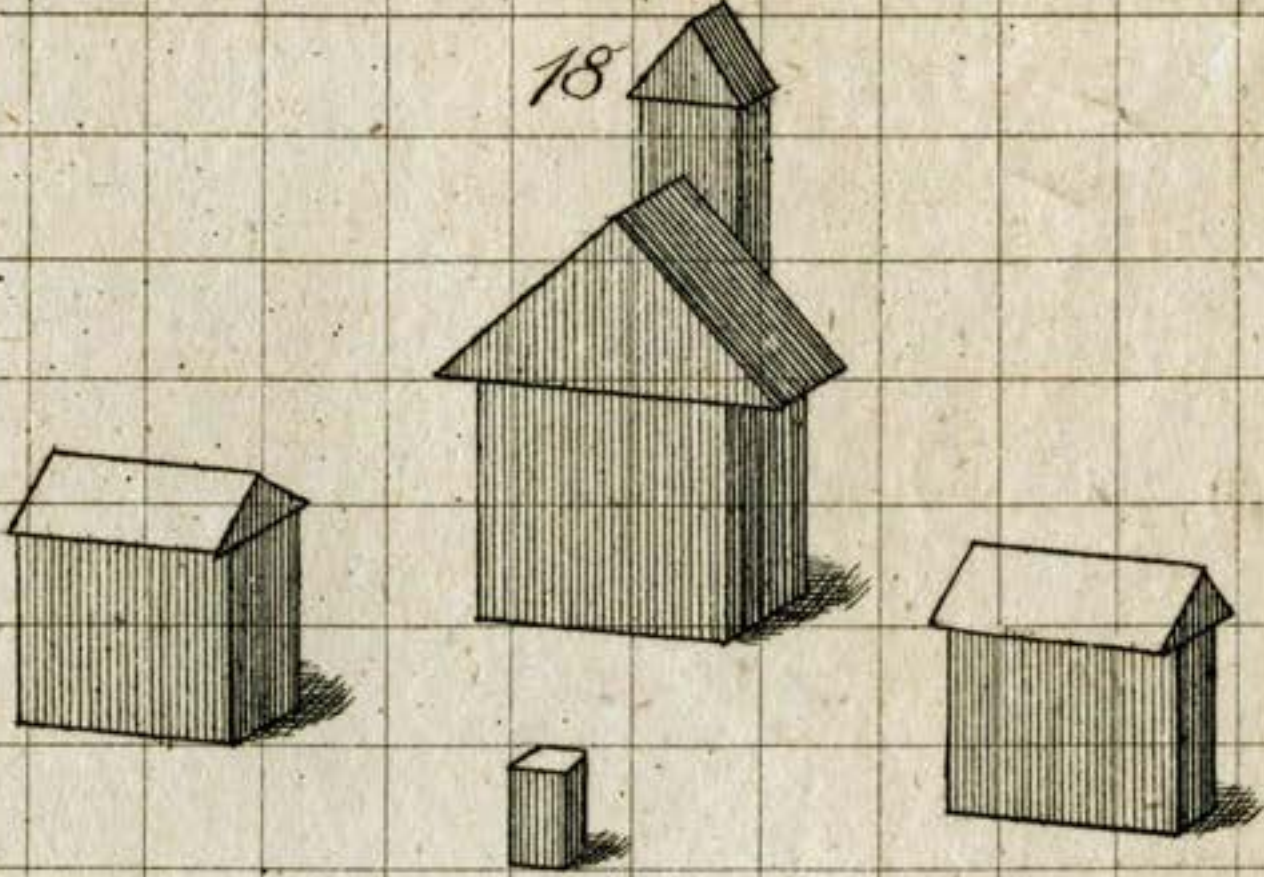


*Stadthor m. Wacht-
u. Zollhaus.*



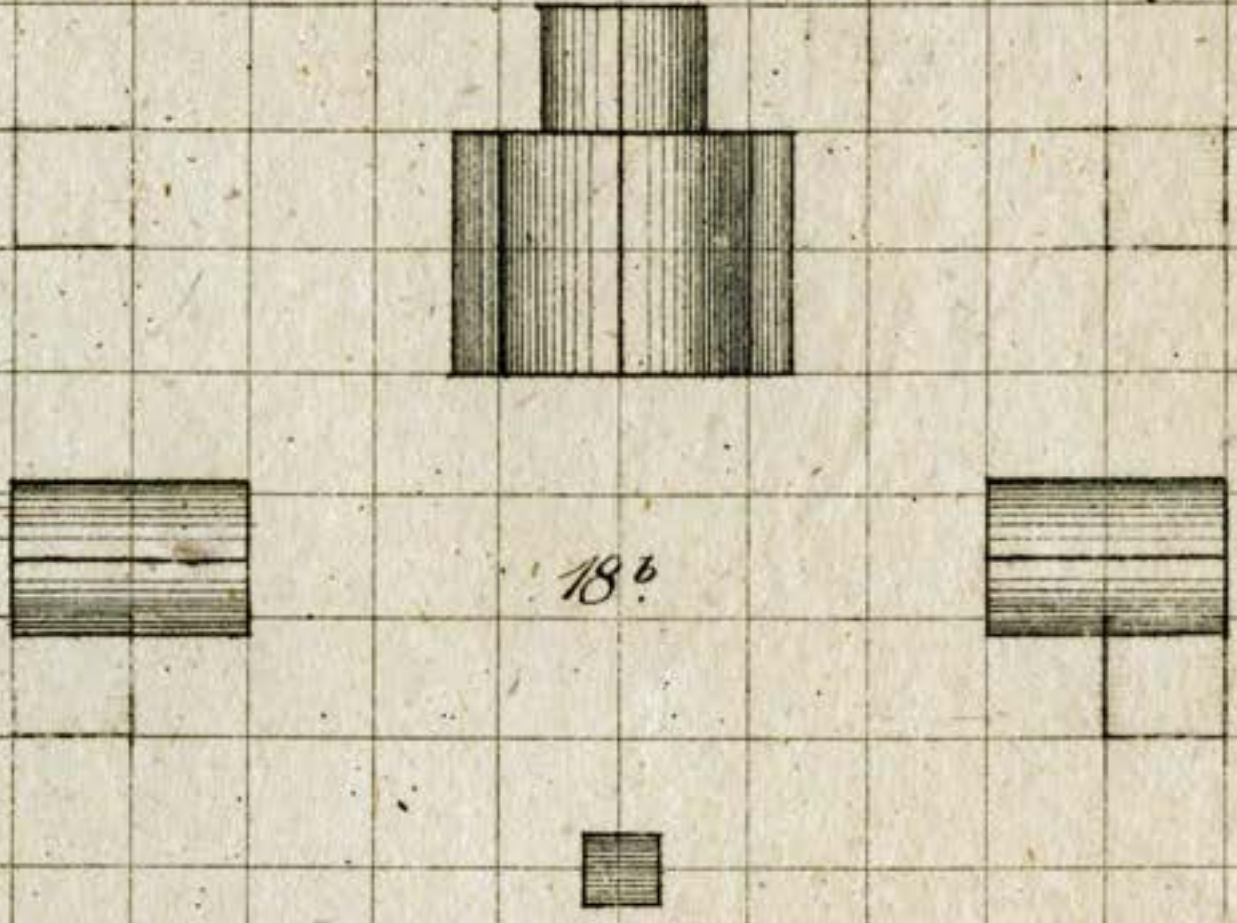
176

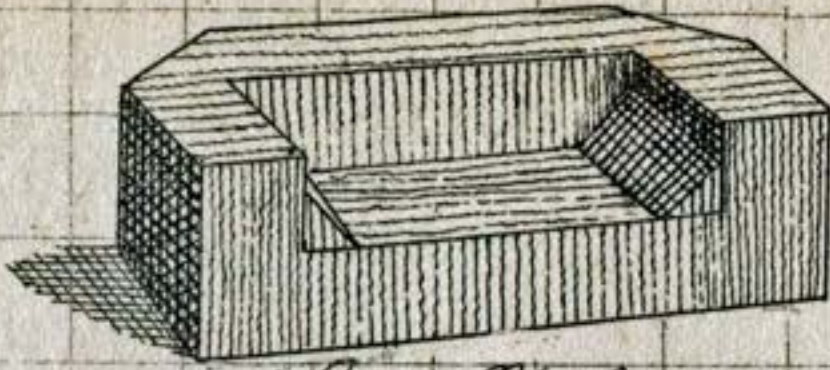
18



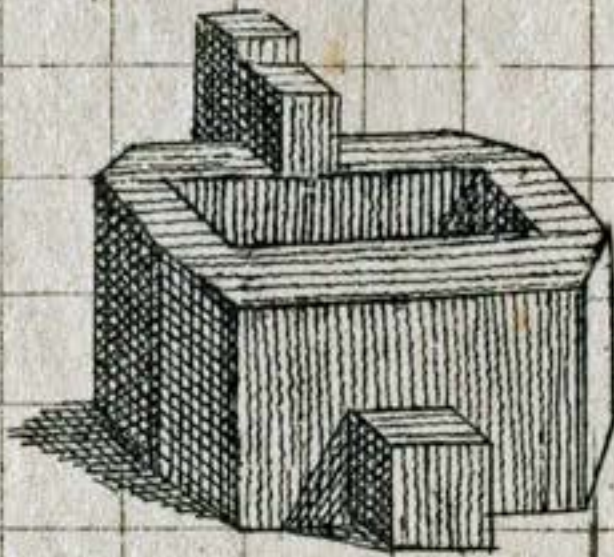
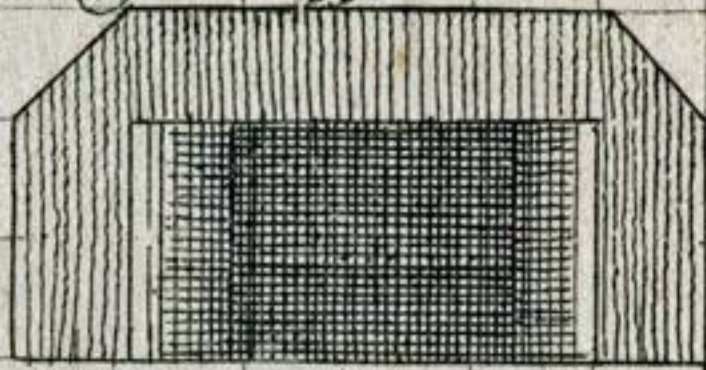
Kapelle u. Einsiedelei

18b

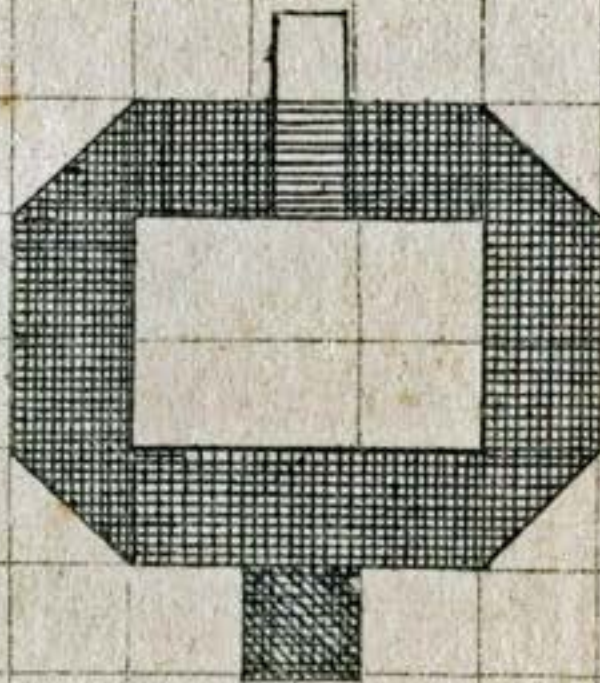


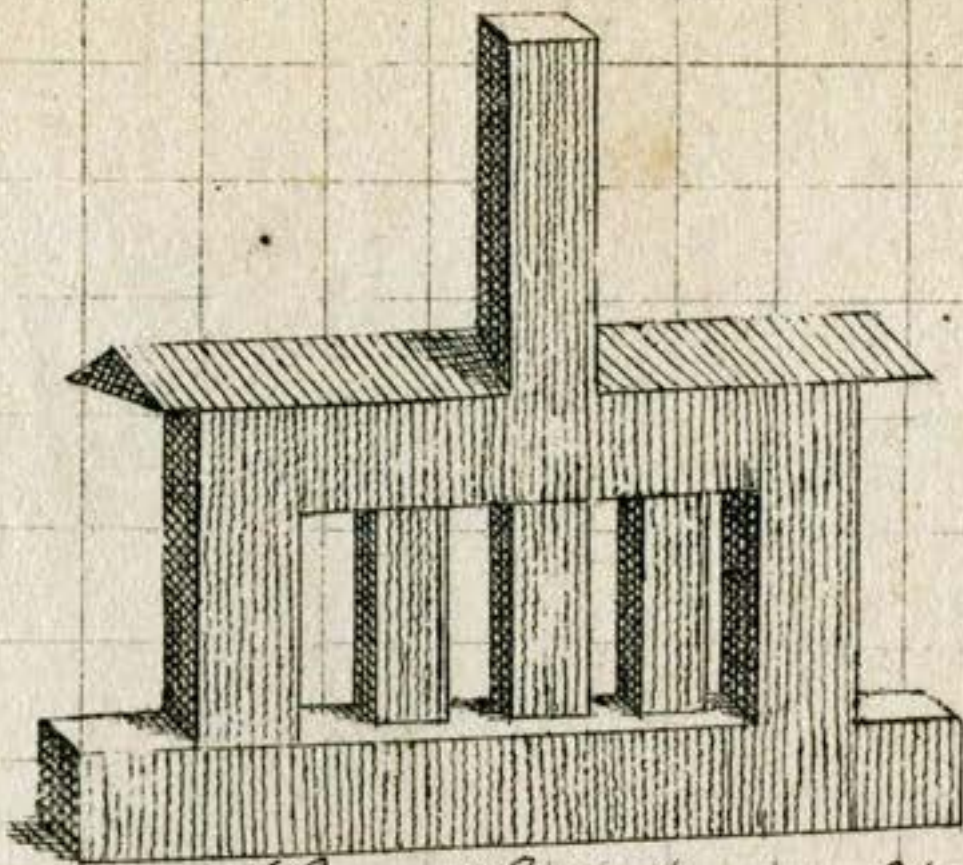


Siehe No. 1.

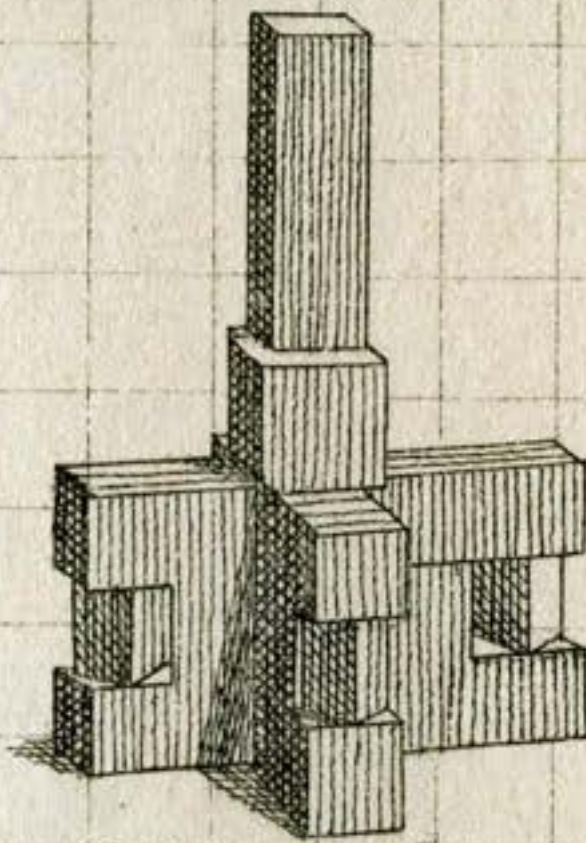
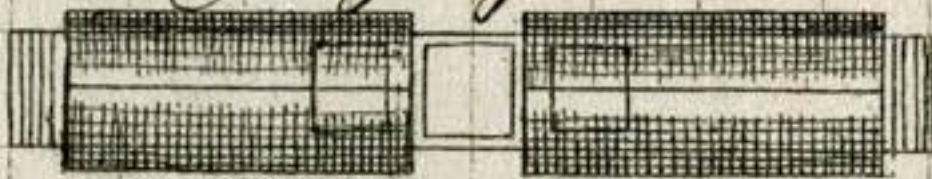


Siehe No. 2.

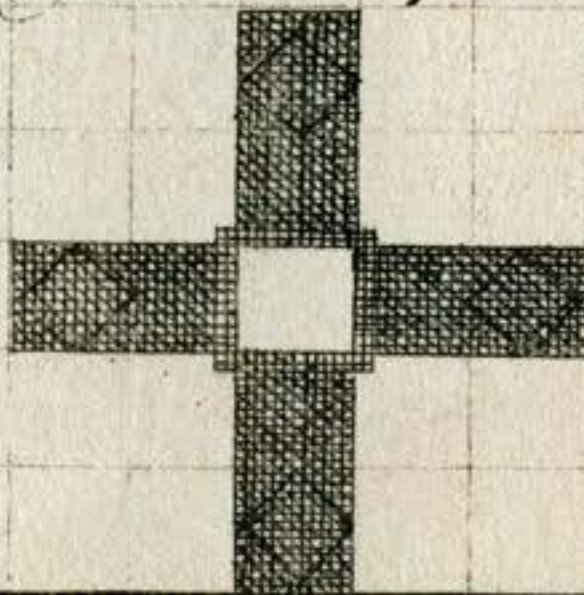




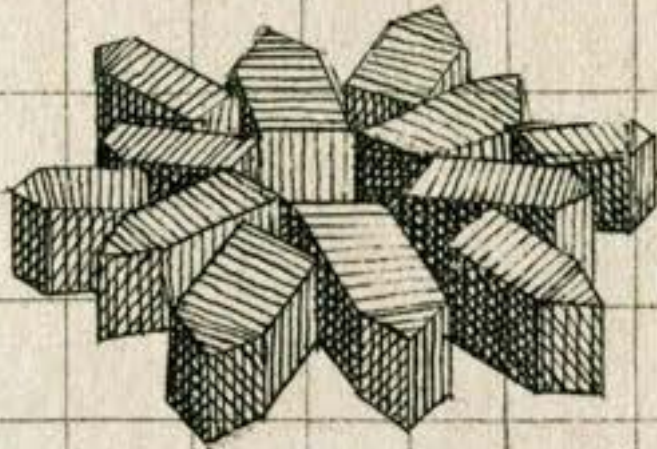
Eine Langtman.



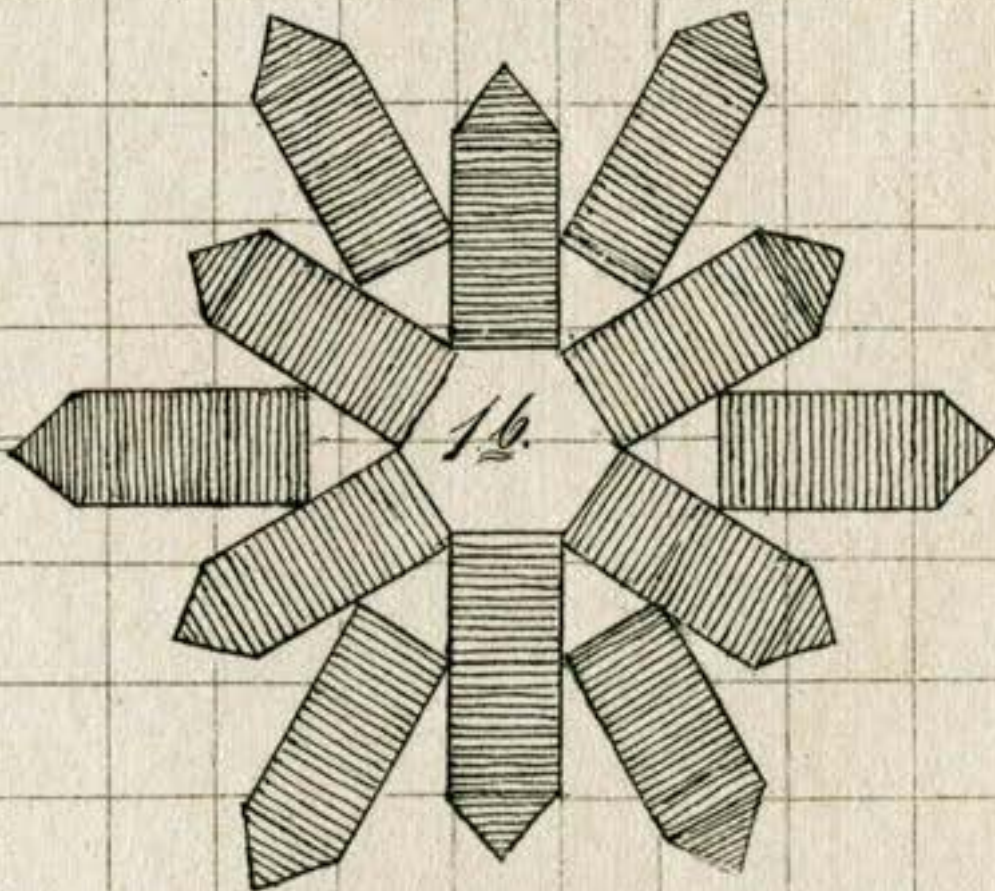
Eine Wandpfeile.



1. a.



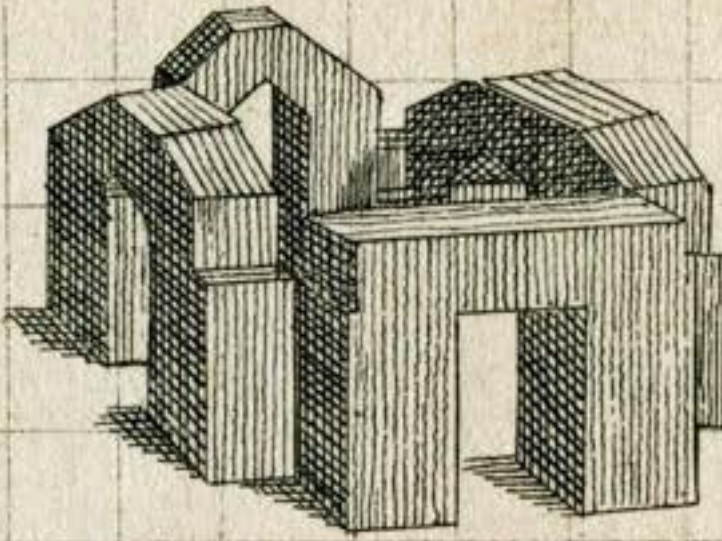
1. b.



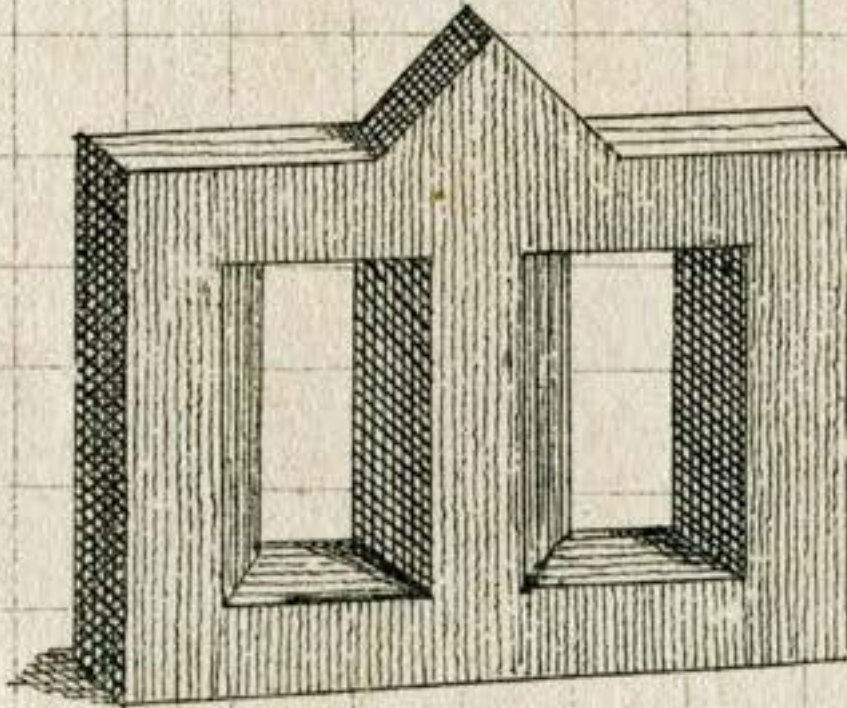
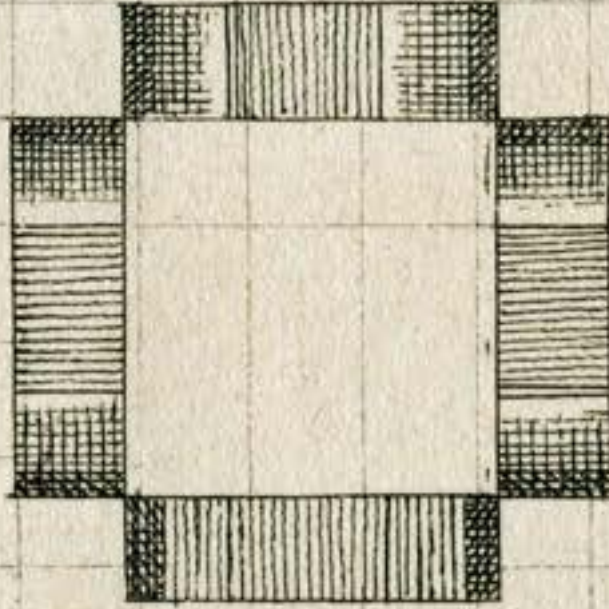
2.



Stangenastalt.

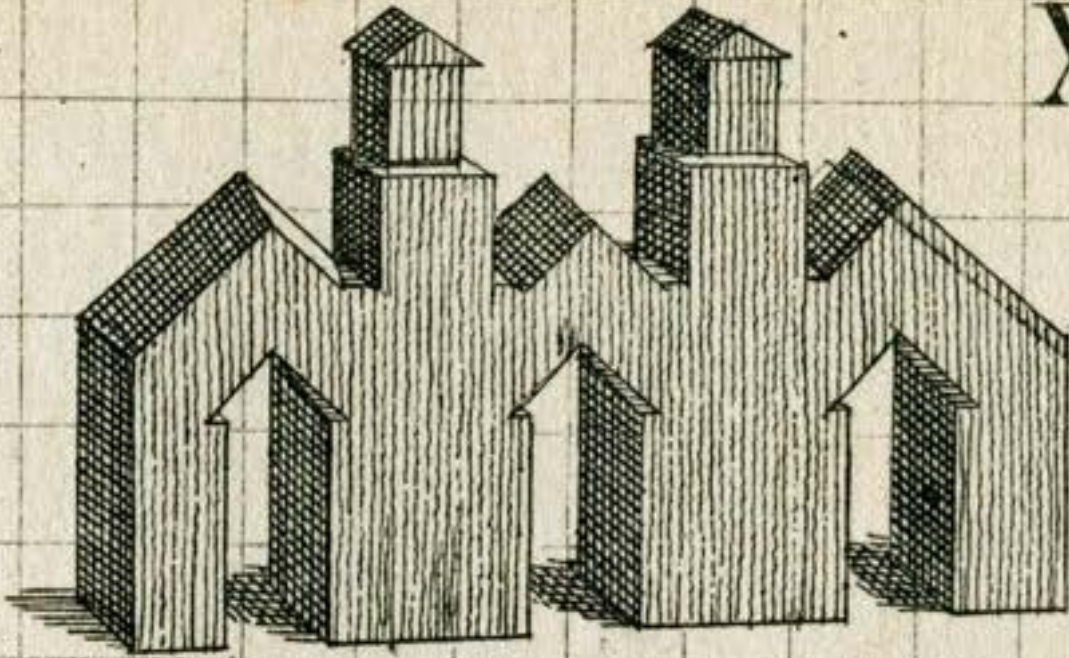


Lunggef.

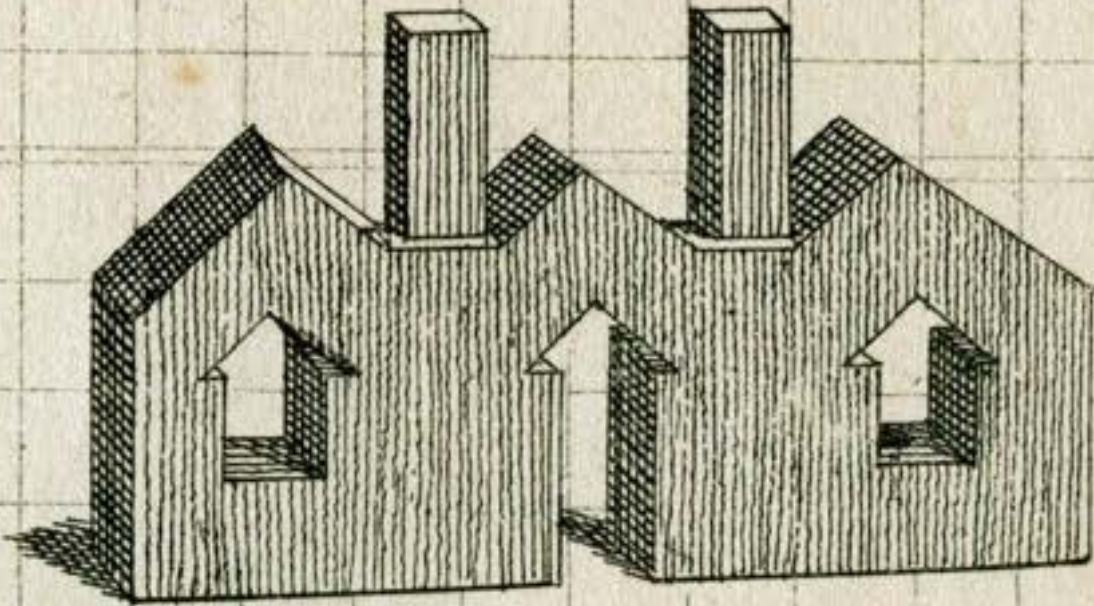
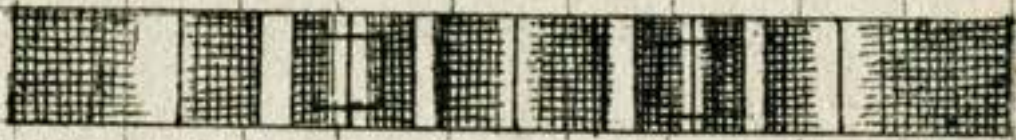


Zibalmann Linnen Kasten.



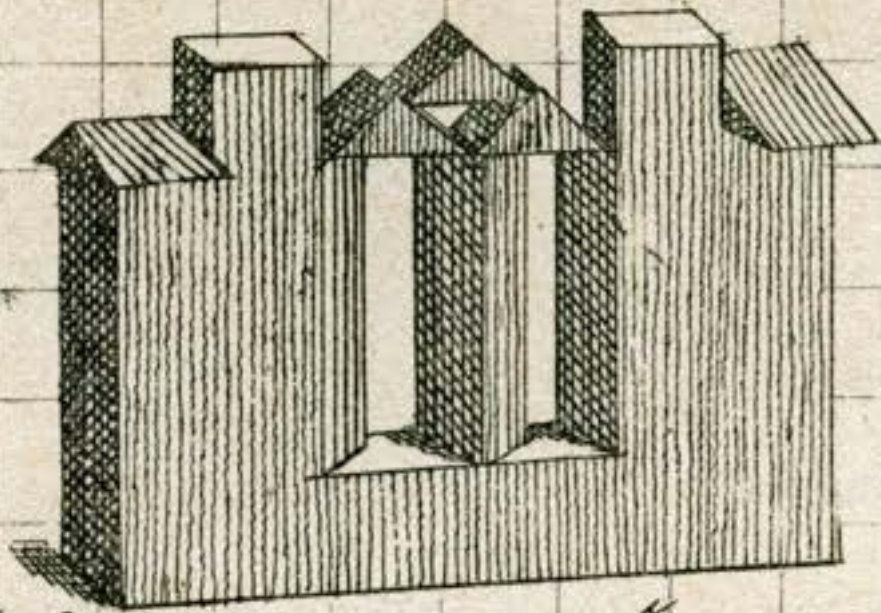


Zwei Thore.

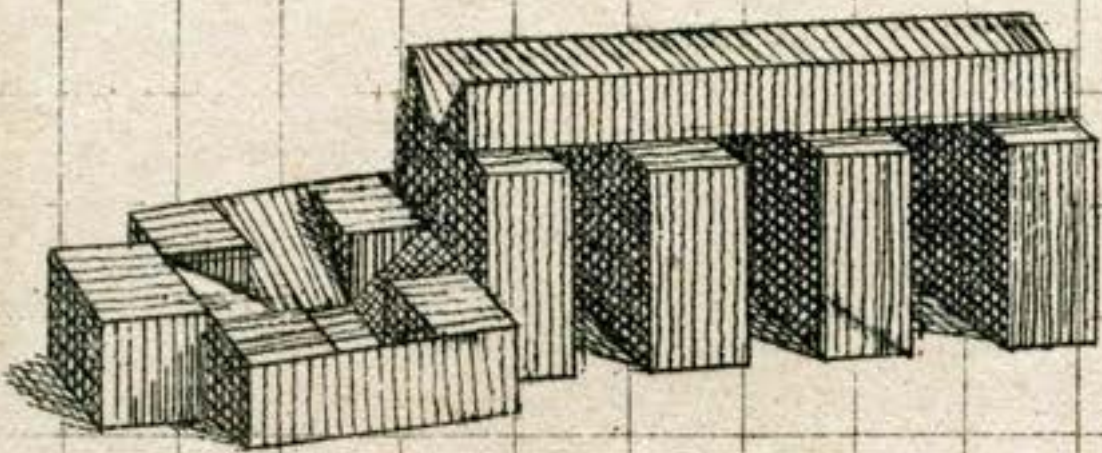
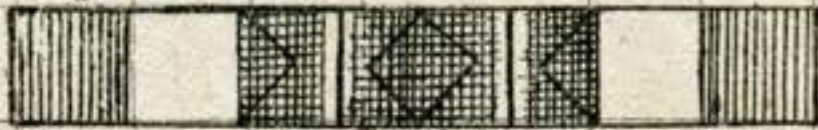


Zwei Thore mit zwei Türstücken.

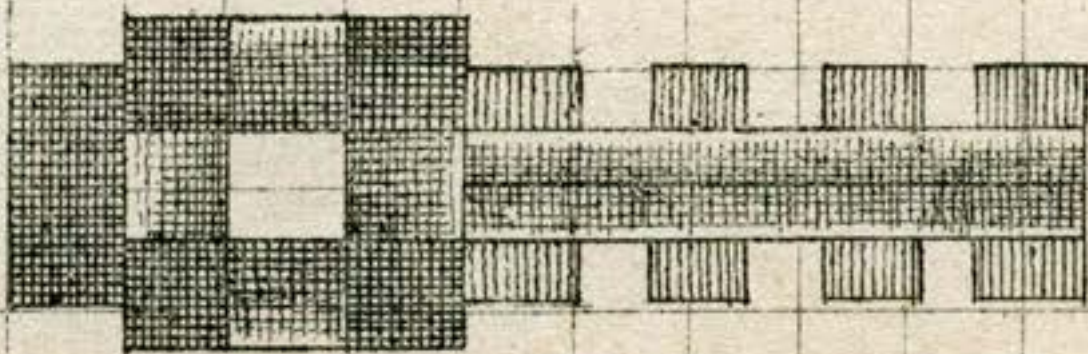


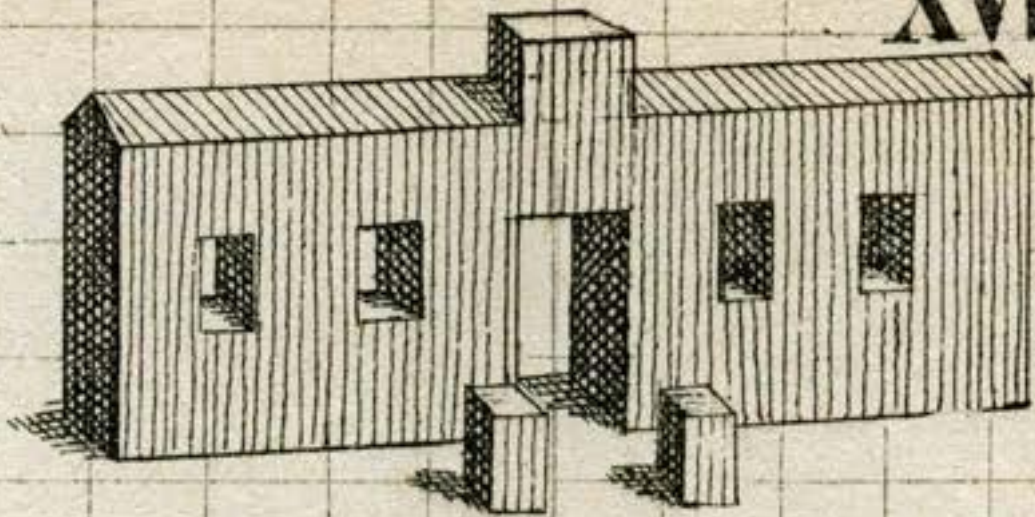


Eisen gegossenes Haupt.



Eisenerne Masse.

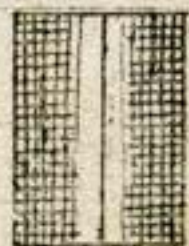
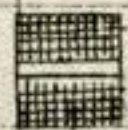
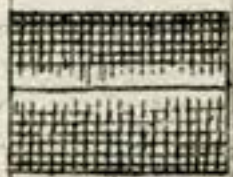
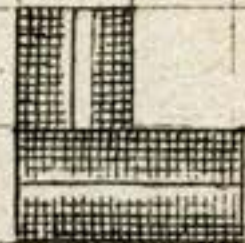
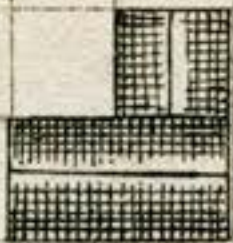
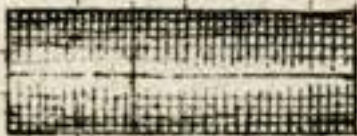




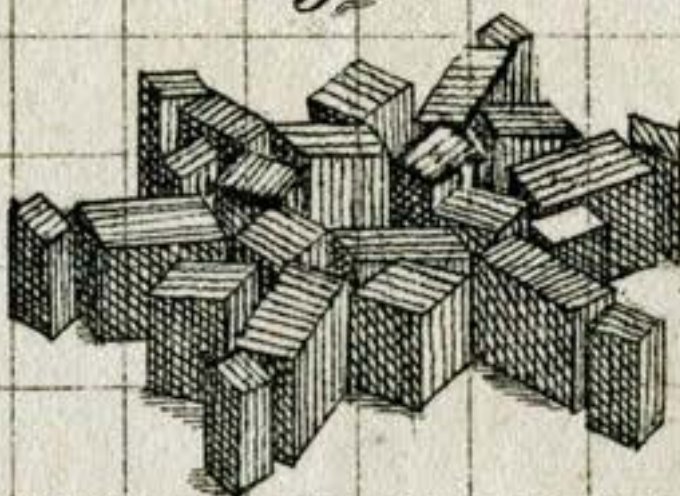
Ein Luftfloß.



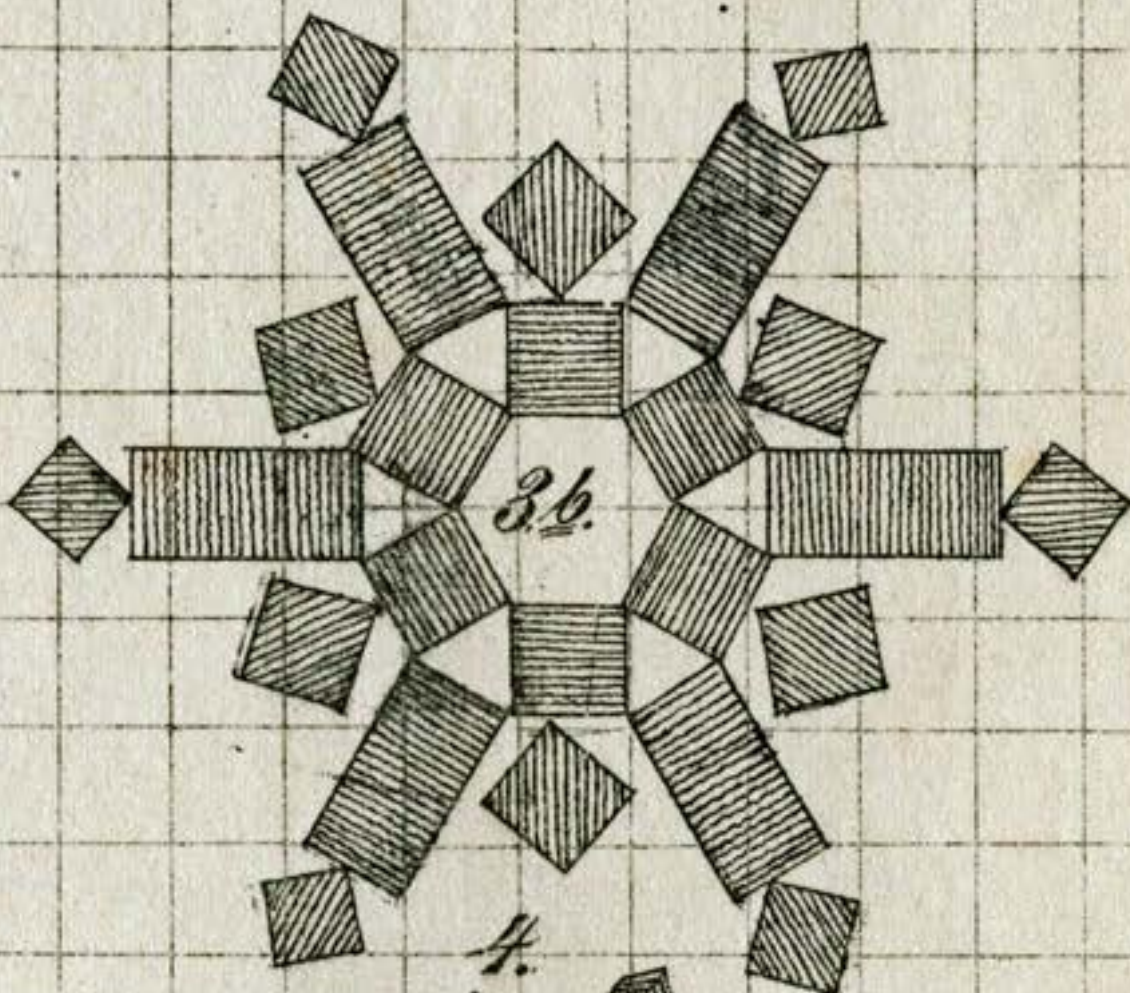
Marktplatz zu Ld.



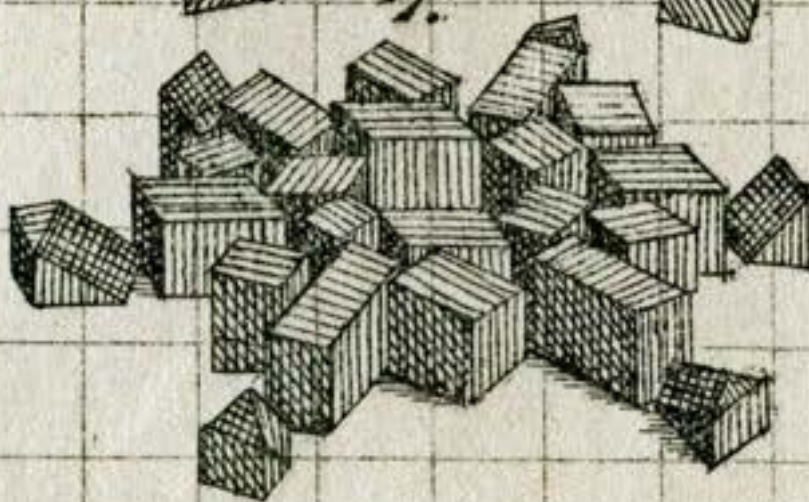
3a.



3b.



4.



Platzgestalt.